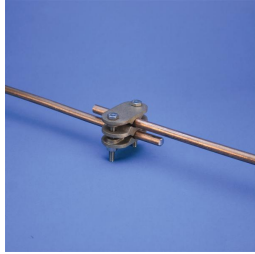


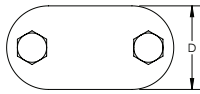
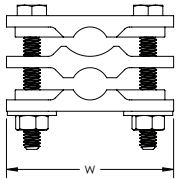


Guiding the Way

Universal Clamp, Solid Round Conductor



- For parallel connections of ERICO CU-BOND Round Conductor



Material: Brass

Part Number	Depth D	Width W	ERICO CU-BOND Conductor	Unit Weight	Complies With
FCT 664	1 1/4"	2 1/2"	CBSC10, CBSC13	0.615 lb	IEC® 62561-1

IEC compliance is valid only for ERICO CU-BOND Conductors listed.

UL, UR, cUL, cUR, cULus and cURus are registered certification marks of UL LLC.