

# COMPLETE AVIAN E1 KIT

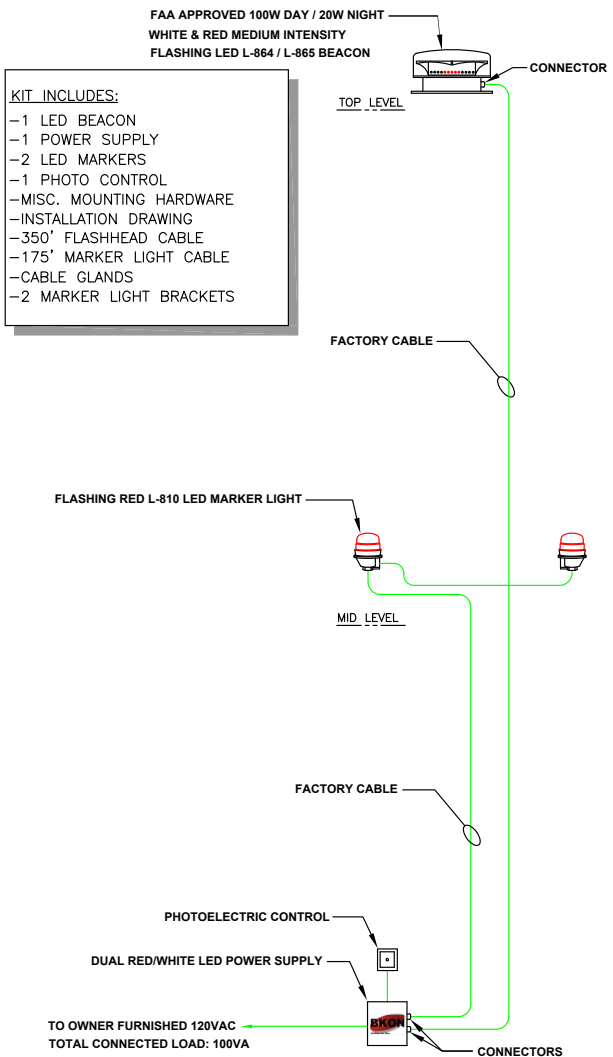
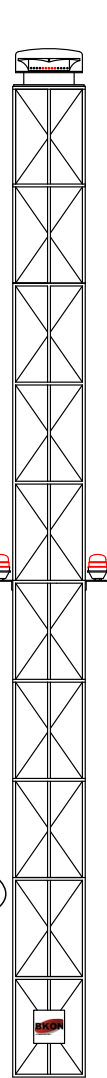
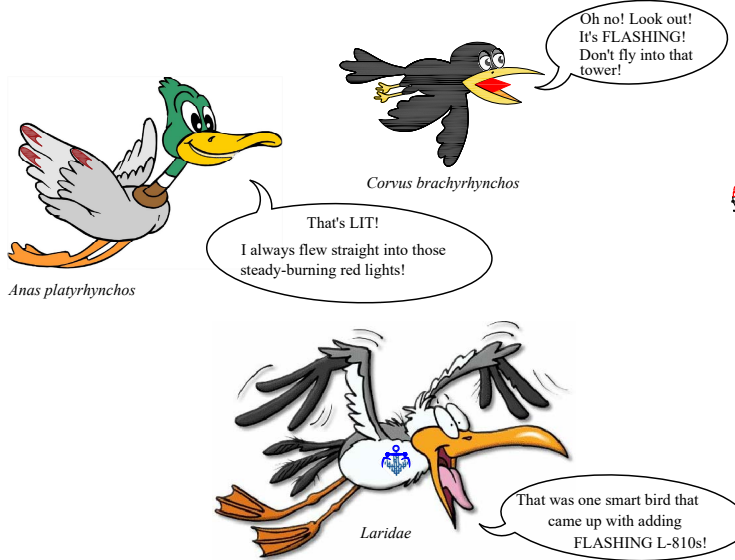
## BKON™ LED Based L-864 / L-865 & L-810 Medium Intensity (Red / White) Strobe and Markers



Unit Weight:	21 lbs
Operating Voltage:	Universal 120 VAC 50/60Hz
Supply Voltage Ranges:	Nominal +/- 10%
Effective Intensity:	White Day 20,000 cd White Night 2,000 cd Red Night 2,000 cd
Wattage:	White Day 85W White Night 10W Red Night 25W
Power Factor:	>0.9
Operating Temp:	-40°F to +131°F (-40°C to +55°C)

Unit Weight:	2.00lbs (0.91 kg) (Single Unit)
Supply Voltage Ranges:	Nominal +/- 10%
Nominal Input Power:	6.5 (FAA - 120 VAC Units)
Power Factor:	>0.9 (All AC units)
Operating Temp:	-40°F to +131°F (-40°C to +55°C)

### Please help us save the Migratory Birds



Order code:

Part Number	Description	Voltage	Certification / Compliance
RTO-1R07-001	Single LED Marker Light	120VAC	FAA
D1RW-C13-429-1	Flash Head and Power Supply (4 conductors)	120VAC	FAA (TC) L-864 / L-865

# BKON

Guiding the Way

LOCATION USA E1 AVIAN KIT

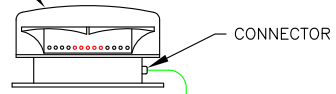
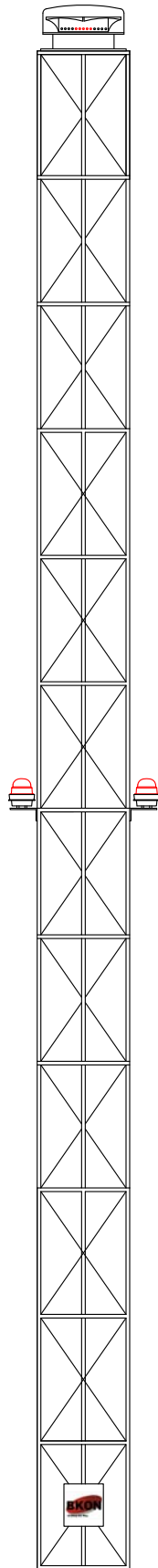
151'-350'

DRAWING NO. E1 AVIAN KIT DATE 2-16-18

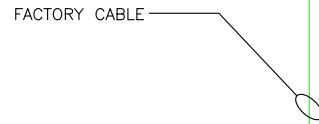
SCALE N.T.S.

FAA APPROVED 100WDAY / 20W NIGHT  
WHITE & RED MEDIUM INTENSITY  
FLASHING LED L-864 / L-865 BEACON

- KIT INCLUDES:**
- 1 LED BEACON
  - 1 POWER SUPPLY
  - 2 LED MARKERS
  - 1 PHOTO CONTROL
  - MISC. MOUNTING HARDWARE
  - INSTALLATION DRAWING
  - 350' FLASHHEAD CABLE
  - 175' MARKER LIGHT CABLE
  - CABLE GLANDS
  - 2 MARKER LIGHT BRACKETS



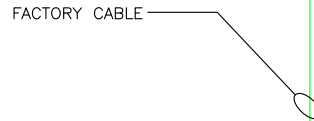
TOP LEVEL



FLASHING RED L-810 MARKER LIGHT



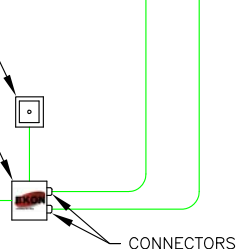
MID LEVEL



PHOTOELECTRIC CONTROL

DUAL RED/WHITE LED POWER SUPPLY

TO OWNER FURNISHED 120VAC  
TOTAL CONNECTED LOAD: 100VA



CONNECTORS